

Dimension/Dimensions:

893 mm (c) x 1264 mm (p) x 1540 mm (a)

N° grates/N° grilles: 4

Capacity chickens/Capacité poulet: 12

Weight/Poids: 205 kg

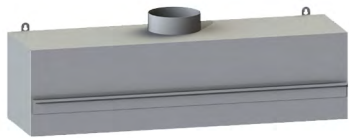
Rated power / Puissance nominale: 13 kw

(hourly consumption) / (consommation heure)

Rated voltage Tension nominale	Rated current Courante nominale		
400V 3N~	22A (L1)	16A (L2)	16A (L3)
230V 1N~	56A (L1)		



scraper
grattoir



module with filter
module avec filtre



conduct
conduita



gutter
gouttière



grid XS (8 mm)
grille XS (8 mm)



grid S (19 mm)
grille S (19 mm)



grid XL (31 mm)
grille XL (31 mm)
standard



grid XXL (42 mm)
grille XXL (42 mm)



grid with 5 skewers
griller avec 5 brochettes



Timers let you control the cooking time of each grid individually. It gives the operator a warning beep signal, but it does not switch off.

Minuteur individuel qui permet de contrôler indépendamment le temps de cuisson de chaque tiroirs. Avertit l'utilisateur à travers un signal sonore, sans couper l'alimentation du tiroir.



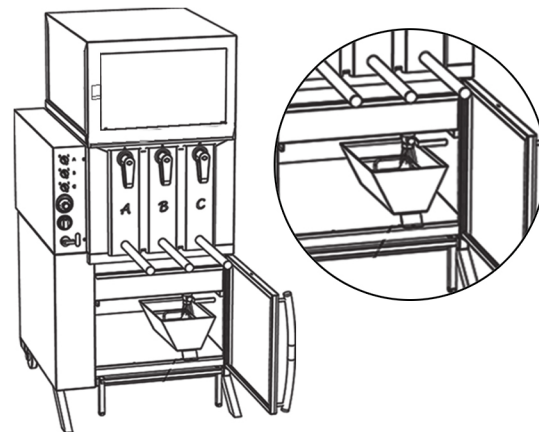
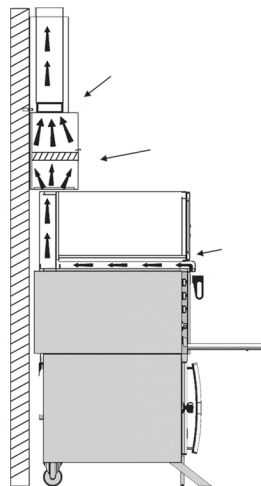
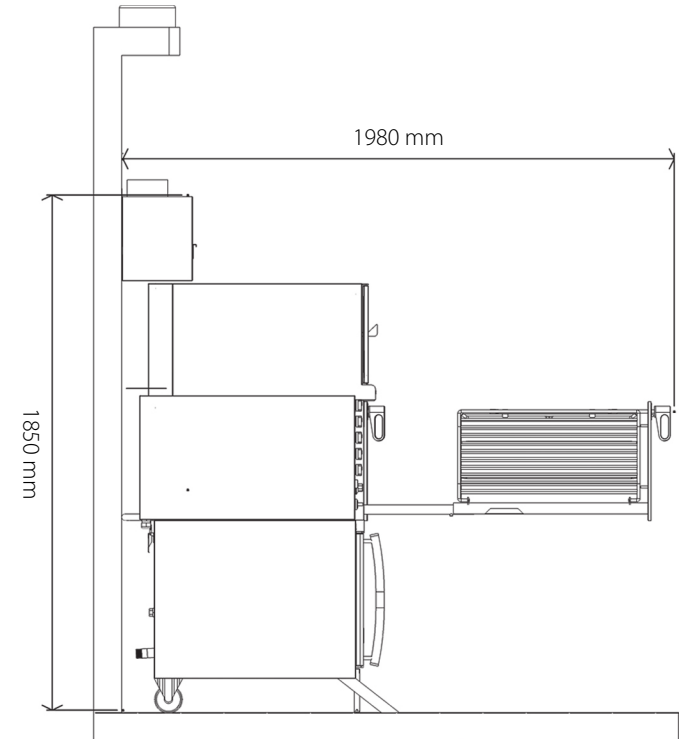
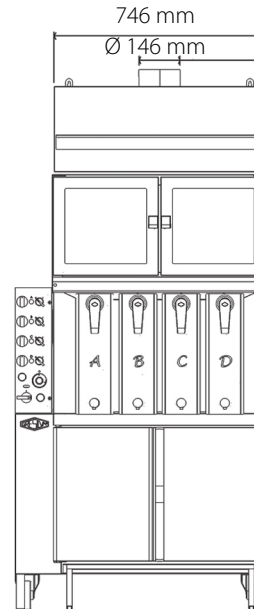
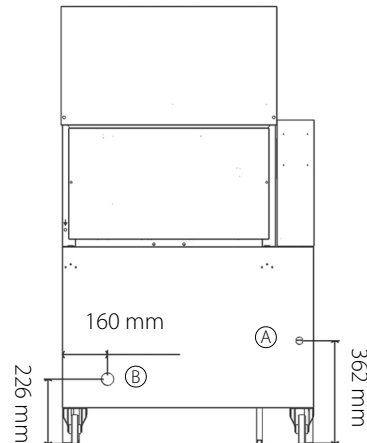
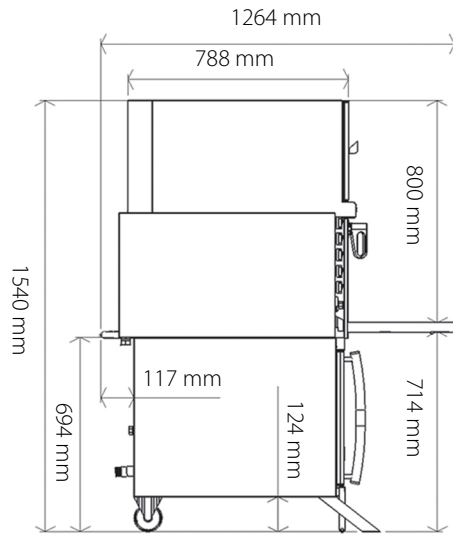
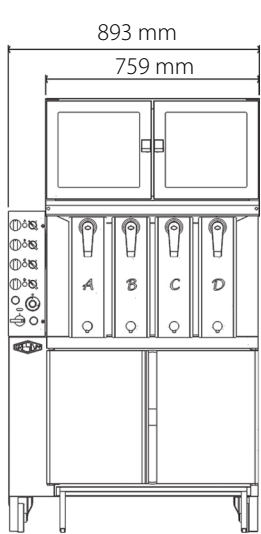
Line | Ligne



Vertical Grill | Gril Vertical
mod **GV4**



www.gresilva.com



- A** - water inlet 3/4" | arrivée d'eau 3/4"
- B** - wastewater outlet 1" | sortie des eaux usées 1"

A composite drainage system by a water collection container of the receiver drawer to be connected to the grease box

Un système d'écoulement constitué d'un conteneur de collect d'eau à partir du tiroir récepteur à connecter à la boîte de graisses

