

Dimensions:

500 mm (l) x 768 mm (p) x 850 mm (h)

Grilling area

378 mm x 618 mm

Weight 101 kg

Thermal Flow 15kw

Type: A

Category: II_{2H3+}

Voltage: 230 V

Electric Power: 0,6 w

Butane gas

Pression - 28-30 mbar

Consommation - 1,1 kg/h

Propane gas

Pression - 37 mbar

Consommation - 1,1 kg/h

Natural gas

Pression - 20 mbar

Consommation - 1,5 m³/h

Built in available

Dimensions:

500 mm (l) x 768 mm (p) x 850 mm (h)

Zone de grillade:

378 mm x 618 mm

Poids: 101 kg

Débit thermique: 15kw

Type: A

Catégorie: II_{2H3+}

Tension: 230 V

Puissance électrique: 0,6 w

Gaz Butane

Pression - 28-30 mbar

Consommation - 1,1 kg/h

Gaz Propane

Pression - 37 mbar

Consommation - 1,1 kg/h

Gaz Naturel

Pression - 20 mbar

Consommation - 1,5 m³/h

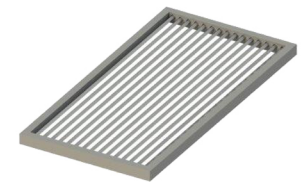
Disponible pour l'intégration



no feet
sans pieds



Scraper
Grattoir



GRE.H5.G10
grid
grill

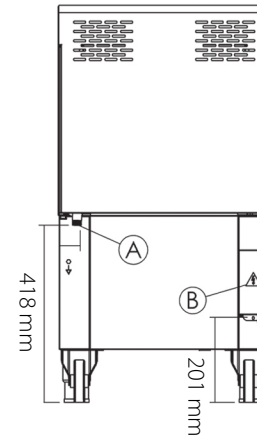
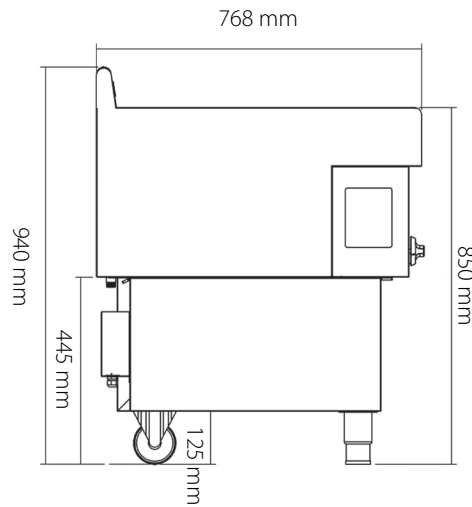
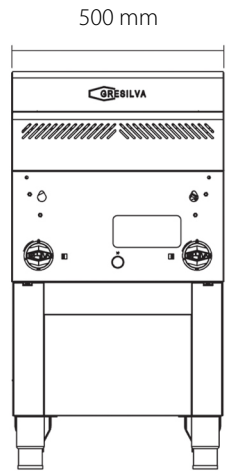


Line | Ligne 7

Horizontal Grill | Gril Horizontal
mod GHPI 2/500

GRESILVA®
a new grilling
concept

www.gresilva.com



A - gas inlet 1/2" | A - entrée de gaz 1/2"
B - power cord output | B - sortie du cordon d'alimentacion

protective plate for ceramic tiles
plaque de protection pour carreaux de céramique

